


A collage of images showing women in various engineering and scientific settings, including laboratories, classrooms, and fieldwork. The collage is divided into several sections with different background colors (orange, blue, green, yellow, red). The text "ANNUAL REPORT 2006-07" is in the top right. "WOMEN IN ENGINEERING PROGRAM" is in the middle left. The logo "Womenengineers" is in the bottom left, and the Purdue University and Purdue Engineering logos are at the bottom center.

Womenengineers



REFLECTIONS FROM THE DIRECTOR



"There is nothing permanent except change."

How true this age-old saying rings for both our university and the Women in Engineering Program. Today we're in the midst of dramatic changes. Perhaps the most notable transition has been the recent opening of Neil Armstrong Hall of Engineering, the college's flagship facility and home to our WIEP offices (plus other Engineering departments and programs). As young women make the transition from high school to college, they will take their first-year engineering courses here, launching their academic careers in the College of Engineering.

We've also experienced some recent WIEP staff changes. Assistant Director Carol Stwalley has assumed a new position in the Minority Engineering Program. And in August, we said goodbye to Associate Director Janine Reklaitis, who retired after serving in her post since 1989. Joining WIEP is Associate Director Suzanne Zurn-Birkhimer. Prior to becoming part of WIEP, she was an assistant professor of environmental science at St. Joseph's College in Rensselaer, Indiana, and assistant department head of Earth and Atmospheric Sciences at Purdue.

Yet another noteworthy transition took place this past summer as Purdue welcomed France A. Córdova, the university's 11th and first woman president. Most recently chancellor at the University of California, Riverside, Córdova brings a wealth of experience to the presidency—both as an educator (physics, astrophysics, and astronomy) and as a scientist (including a term as chief scientist with NASA). We look forward to her tenure here and appreciate her passion for education.

What an exciting time it is to be at Purdue and in the College of Engineering. We thank you for the role you play in making Women in Engineering at Purdue a success, and we look forward to continuing that partnership.

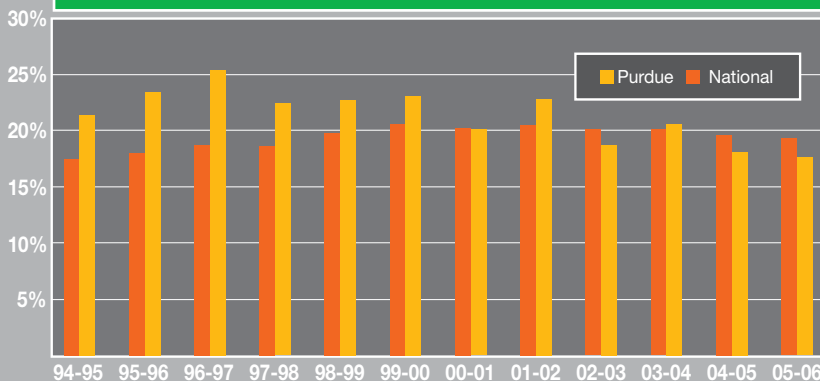
Sincerely,

Beth Holloway

Director, Women in Engineering Program

MISSION

Engineering Degrees Conferred to Women 1995-2006



The Women in Engineering Program at Purdue University is dedicated to enriching the profession of engineering through the full participation of women.

We develop and direct activities that provide:

- encouragement for girls and young women to study engineering
- information about careers and companies
- an environment conducive to the successful completion of students' studies.

We also strive to maintain strong relationships with the alumnae, employers, and friends who generously support our program.

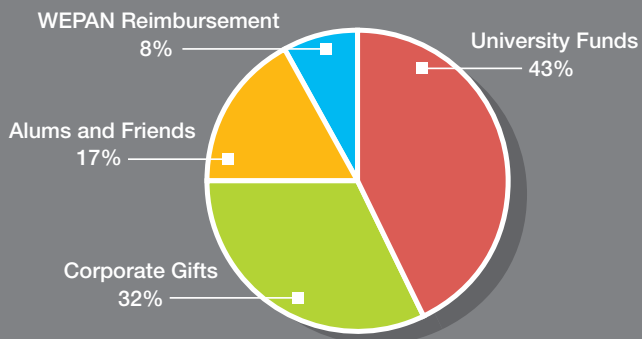
OBJECTIVES

- Provide career information and encouragement to pre-college girls and young women to continue achievement in math and science and consider engineering as an appropriate career choice.
- Encourage women to matriculate at Purdue University in the College of Engineering.
- Ensure a climate in the College of Engineering that allows young women to reach their full potential.
- Provide opportunities for women engineering students to develop leadership skills that can be utilized in their future lives.
- Encourage women to consider graduate education and academia among their options upon graduation.
- Maintain open communication with alumnae and their employers to encourage their continued participation in and support of the Women in Engineering Program.

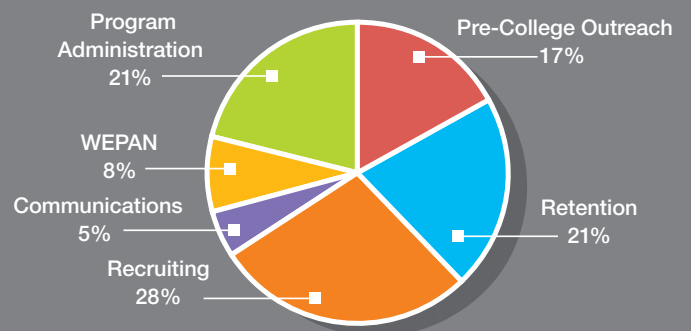
Enrollment of Women in Engineering • Fall 2006

Schools	Undergraduates	Graduates
Aeronautics and Astronautics	17%	16%
Agricultural and Biological	36%	33%
Biomedical	37%	42%
Chemical	37%	24%
Civil	21%	23%
Construction	20%	
Electrical and Computer	10%	18%
Industrial	28%	24%
Interdisciplinary	10%	22%
Materials Science	25%	33%
Mechanical	11%	12%
Nuclear	14%	5%
First-Year Program/Engr. Education	15%	50%
Total	17%	20%

Projected Income • 2007-08



Projected Expenses • 2007-08





*Women*engineers

Since 1969 the Purdue Women in Engineering Program has been committed to increasing the recruitment, retention, and graduation of women engineering students. Each year we reach out to support and inform more than 2,000 girls and young women—from elementary school through graduate school. Following is a brief review of our individual programs for 2006-07, with a spotlight on three of our programs: the Exciting Discoveries for Girls in Engineering (EDGE) summer camp, WIEP Discovery Day, and the Personal Connection Program.

K-12 OUTREACH ACTIVITIES

Twenty-six percent of the students who have attended EDGE as high school freshmen and sophomores have enrolled at Purdue in Engineering.

Love Engineering At Purdue (LEAP):

Love Engineering At Purdue is a three-day summer residential camp for rising 7th, 8th, and 9th graders. The goal of LEAP is to introduce engineering to girls through hands-on projects, academic and industry tours, and interaction with current Purdue engineering faculty and students. This year's cohort of 33 campers focused its attention on renewable energy. Campers worked in groups to construct objects to study renewable energy such as a solar oven to bake cookies, a robotic arm to study the challenges of hydraulics, and a windmill to test the amount of energy that could be produced. The campers also had the opportunity to tour the Purdue Solar Racing Team garage as well as a new hybrid city bus, see projects completed by the ME senior design class, and listen to

a panel of alumni speak on engineering careers. As a parent stated, LEAP is a "tremendous opportunity for teens to learn about engineering in a fun and practical way." (Sponsored this year by Boeing Corporation, Caterpillar Corporation, General Motors Corporation, and the Bechtel Foundation.)

Exciting Discoveries for Girls in Engineering (EDGE):

Exciting Discoveries for Girls in Engineering is a residential summer camp for rising high school sophomores and juniors. The goal of EDGE is to highlight engineering as an exciting career where creative and imaginative people thrive. Leadership and teamwork skills are also honed as the campers work in groups to complete hands-on engineering projects. The campers' main focus was a team challenge using

LEGO RoboLab. The teams had 14 hours to construct and program a robot to compete in the challenge course, and the campers also constructed platform shoes out of cardboard and a water filter out of camp supplies. The participants toured laboratories at Purdue as well as Eli Lilly, and attended talks on "Human Factors in Engineering," "How to Succeed in College," and an enthralling life story of a successful female engineer. (Sponsored this year by Motorola Incorporated, Eli Lilly, ExxonMobil, and Delphi Corporation.)

Introduce a Girl to Engineering Day:

Introduce a Girl to Engineering Day is a one-day, on-campus program held in conjunction with National Engineers Week. The program introduces engineering concepts to early high school students via a theme. This year's theme was alternate energy sources. (Sponsored this year by Caterpillar Corporation.)

EDGE Quotes:



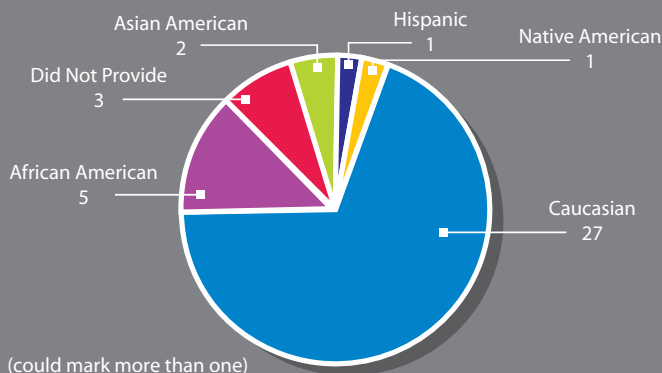
The projects were both very interesting, involved a lot of creativity, allowed you to work with people you enjoyed the company of, and allowed/forced us to think outside the box.

I learned so much! I love engineering so much more now.

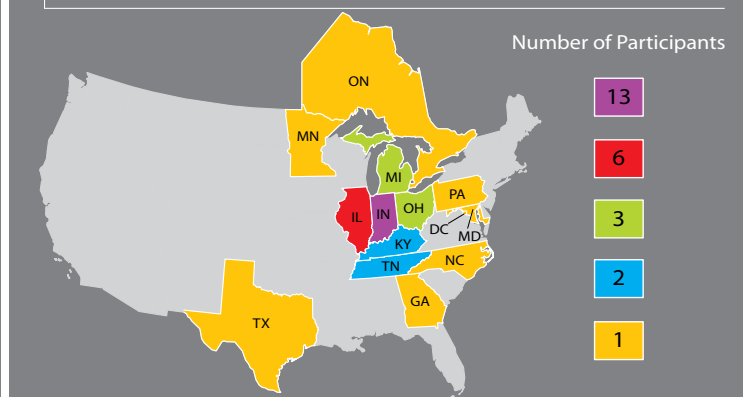
Not only did [my daughter] find it challenging, she found her experience to be rewarding and informative.



EDGE Participants by Ethnicity



EDGE Participants by Location



RECRUITING ACTIVITIES

WIEP Discovery Days:

High school juniors and seniors, along with their parents and teachers, are invited to Purdue for a day each fall and spring. The prospective students learn about two types of engineering from engineering professors and graduate students. They also participate in a question-and-answer session with current women engineering students and hear from a panel of Purdue engineering alumnae. There are campus tours, lunch with a keynote speaker, and sessions about residence halls and financial aid.

The Purdue University section of the Society of Women Engineers assists with the planning of Discovery Days and provides the approximately 50 student volunteers needed to make each Discovery Day successful. (Sponsored this year by Alcoa Inc., Boeing Corporation, Fluor Corporation, General Motors Corporation, Raytheon Company, and United Technologies.)

Discovery Day Quotes:

“

Now I want to pursue options for engineering more; before I was unsure.

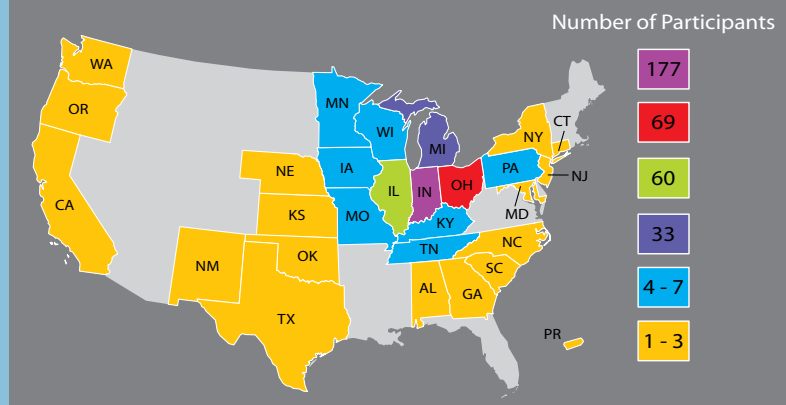
It showed me what real people are doing with their degrees; I really appreciated that.

”



WIEP Office Assistants

Discovery Day Attendees by Location Spring and Fall 2006



Matriculation Results for Discovery Days

	Number of Participants	Parents	Matriculated	Percent Matriculated	Combined Jr & Sr Days
SP03	154	222	58	38%	39%
FA03	229	280	90	39%	
SP04	125	142	44	35%	37%
FA04	206	238	79	38%	
SP05	125	165	54	43%	34%
FA05	226	254	65	29%	
SP06	175	279	44	25%	29%
FA06	228	283	72	32%	
SP07	118	196	N/A	N/A	

SP = Spring

FA = Fall

Personal Connection Program:

The Personal Connection Program (PCP) is one of our recruiting programs for admitted students. The goal of PCP is to create a “personal connection” between admitted students and Purdue, promoting increased comfort with Purdue and its students, thus encouraging students to choose Purdue for their engineering studies.

Young women admitted to the College of Engineering are called by PCP program staff and current student volunteers to answer questions and discuss opportunities and options at Purdue. When an admitted student pays a tuition deposit, she is then matched one-on-one with an



Personal Connection Program Leadership Team

undergraduate student from her home area so they can communicate via e-mail and phone. Admitted students also receive a note from the Women in Engineering Program, congratulating them on their admission; a letter from the dean of Purdue Engineering, encouraging them to enroll; and a magnetic photo frame, inviting them to “Picture Yourself in Purdue Engineering.”

Just over half of the admitted women were reached via phone calls this year. Of those who were reached, 25 percent enrolled in Engineering at Purdue, compared to only 20 percent of those who could not be reached. Breakouts between in-state and out-of-state students are shown in the table below. (Sponsored this year by Deere & Company and General Motors Corporation.)

06-07 Totals	Reached		Not Reached	
	Paid Deposit	Enrolled	Paid Deposit	Enrolled
In-state	69%	60%	55%	52%
Out-of-state	20%	17%	15%	11%
Total	29%	25%	24%	20%

RETENTION ACTIVITIES

Earhart Residential Program:

Every year since 1994, undergraduate women majoring in engineering have been able to choose to live on one of three designated engineering floors in Earhart Hall. The students who live on the engineering floors have access to female engineering mentors who provide them with support and encouragement. Since engineering students share a common first-year curriculum, the women on the engineering floors can easily form study groups and social networks. In addition, the Women in Engineering Program – Women in Science Program tutoring service is located in Earhart Hall for the convenience of the students who live on the engineering floors. (Sponsored this year by General Motors Corporation.)

ENGR 194, Women in Engineering Seminar:

First-year students may elect this one-credit course that utilizes dynamic speakers to reinforce the students' educational and career choices. Students hear presentations from a variety of practicing engineers who talk about their engineering career choices, their daily routines on the job, and the challenges and successes in their professions as well as in their personal lives. Speakers range from well-established corporate executives to recent graduates. The seminar speakers act as energizing role models, and the students begin to learn networking skills. (Sponsored this year by General Motors Corporation.)

WIEP-WISP Tutoring Service:

A free tutoring service for first-year classes, co-hosted by the Women in Science Program (WISP), is offered on a walk-in basis. Women who are upper-class science and engineering majors are employed and trained as tutors. In addition to providing homework help, the tutors are seen as mentors and role models. The tutoring service is located in the Earhart Hall conference room and adjoining computer lab for the convenience of the women who live on the engineering and science floors there. (Sponsored this year by General Motors Corporation.)

M&M: Mentors & Mentees Undergraduate Mentoring Program:

One program matches first-year women with juniors, and the other matches sophomore women with seniors for formal and informal activities. In the context of mutual mentoring, students receive affirmation and strategies to succeed in engineering. The program is based upon eight monthly meetings that provide academic, personal development, and professional strategies. The objectives of the program are:

- To enhance personal support of students through contacts with female role models and mentors, on a monthly and weekly basis.
- To build confidence in students through affirmation of their skills and values.
- To share effective strategies that lead to successful completion of their engineering education and prepare them for future careers as engineers. (Sponsored this year by Kimberly-Clark Corporation, PPG Industries Inc., and United Technologies.)



Undergraduate Mentoring Program Leadership Team



Graduate Mentoring Program Leadership Team

Graduate Mentoring

Program:

The Graduate Mentoring Program provides information and strategies to assist women engineering graduate students to attain success personally, academically, and professionally. This is achieved within the framework of a networking mentoring model and through consistent assessment of program objectives and results. The networking model for the program is implemented primarily through monthly meetings that allow participants to interact with each other and experience lively, informative speakers in a supportive environment. (Sponsored this year by the heads and deans of the College of Engineering.)

MentorNet:

The national electronic industrial mentoring network for Women in Engineering and Science matches undergraduate and graduate students from colleges and universities with practicing engineers throughout the United States. Purdue's WIEP is one of MentorNet's original university partners. (Sponsored this year by the dean of the College of Engineering.)



CORPORATE DONATIONS FY 2006-07

\$20,000 and above

Boeing Company
General Motors Foundation Inc.
Motorola Foundation

\$10,000-\$19,900

Alcoa Inc.
Bechtel Group Foundation
Caterpillar Foundation
Fluor Foundation
Intel Corporation

Up to \$10,000

Accenture
Chevron Products Company
Eli Lilly and Company Foundation
ExxonMobil Chemical Company
Fidelity Charitable Gift Fund
Indiana Section Society of Automotive Engineers
John Deere Foundation
Kimberly-Clark Corporation
Lyondell Chemical
PPG Industries Foundation
Schwab Fund for Charitable Giving
Siemens Corporation
United Technologies

MATCHING DONATIONS FY 2006-07

\$1,000 and above

Boeing Gift Matching Program
Eli Lilly & Company Foundation Inc. MGP
ExxonMobil Foundation
Henry Luce Foundation Inc.
IBM International Foundation
Procter & Gamble Fund
Raytheon Company

\$500-\$999

Abbott Laboratories Fund
Detroit Edison Foundation
GE Foundation
Pepsico Foundation Incorporated
Shell Oil Company Foundation
Sun Microsystems Foundation
Unilever United States Foundation Inc.

Up to \$500

3M Foundation Inc.
Agilent Technologies
Air Products and Chemicals Inc.
AllianceBernstein L.P.
American Electric Power
American Standard Foundation
Anheuser-Busch Foundation
Baxter International Foundation
Caterpillar Foundation
Chevron Corporation/MGP
Cisco Foundation
Corning Incorporated Foundation
DaimlerChrysler Corporation Fund
Duke Energy Foundation/MGP
Entegris Inc.
Exelon MGP

General Mills Foundation
General Motors Foundation Inc.
Goldman, Sachs & Co./MGP
Graco Foundation
Honeywell Hometown Solutions
Intel Foundation
Invensys Systems Inc.
IR Charitable Foundation 130
Key Foundation
Lockheed Martin Mtg Gift Prog
Michael Baker Corporation
Motorola Foundation
Nordson Corporation
Northrop Grumman Foundation
Pepsi Bottling Group Inc.
Pfizer Matching Gifts Program

PPG Industries Foundation
Roche Diagnostics/MGP
Rockwell Int'l Corp Trust/MGP
RohMax USA Inc.
Saint Jude Medical Inc.
Saint-Gobain Corporation Foundation
Sartomer
Starbucks Matching Gift Program
Texas Instruments Foundation
United Technologies
Wells Fargo Foundation/MGP
Whirlpool Foundation



INDIVIDUAL DONATIONS FY 2006-07

Total Gift of \$15,000 and above

Barbara Haney

Total Gift of \$5,000-\$14,999

Thomas Head

Total Gift of \$1,000-\$4,999

Marcia & Ted Alstott

Jane Zimmer Daniels

Sara & Joseph Evans

Sheryl Fine & John Lewis

Abbie Griffin & Ken Schreiner

Deborah Grubbe & James Porter Jr.

Susan Hallen

Beth & Eric Holloway

Kristen Kukral

Cindy & Mark Lawley

William & Kristin Leese

Anna (Bets Lillo) & Raymond Bukszar

Susan & Robert Nalewajk

Deborah Patrick

Janis & Robert Richert

Nancy Sarkisian

Carol & Robert Stwalley III

MaryAnn Zimmerman

Total Gift of \$500-\$999

Theresa & George Adams Jr.

Anna-Marie & Peter Bakst

Theresa Carter

Sarah Corbin

Jill & William Derise

Gwendolyn Doering

Renee Fieldhouse

Patricia Galloway & Kris Nielsen

Christie Girouard

Karen Greenland

Nishi Gupta

Mary Helmick

Jane Howell

Nancy & William Huber

Linda & James Huff

Betsy Huntingdon

Gwynne Johnson

Harvey & Barbara Lee

William & M. Julianne McClung Jr.

Terrie McComb

Erin McGinnis

Laura & Robert Mechalke Jr.

Sandy Postel

Doris Powers

Tamara & Nicolaus Radford

Patricia & Bloor Redding Jr.

Martha Rees

Kimberly & William Riddle

Mary Kay & Joel Rust

Nikki Spencer

Norma Taylor

Patricia & Bernard Tobergte Jr.

Douglas & Susanne Upshaw

Henry & Emily Wadsworth

Susan Watts

Suzanne William

Anne & James Wilson

Susan Woodling

Robert & Marcia Ziek Jr.

Total Gift of \$101-\$499

Jennifer Ahlskog

Karol & John Antrim

Karen & David Ashley

Patricia Behrens

David & Caroline Berghult

Linda Blevins

Katherine Boyers

Dwight & Kimberly Brandon

Tamara Christen

Kendall & Andrew Cipra

Catherine & Douglas Costelle

Terry & Cathie Dager

Lara & Thomas Daly Jr.

Robin Wippich-Dienhart & Thomas Dienhart

Deborah & David Downey

Mary Duncan

Holly & David Easterbrook

Susan Ellspermann

Carol Fahey

Kristina Farley

Charles & Gretchen Fleischer

Arthur Forkos & Phyllis Weil-Forkos

Elizabeth Fortman

Meg Fortney

Roger & Diana Fowee

Steven & Becky Fredrickson

Kuk & Stephen Frey

Karen & J. Gentle

Roberta & John Gleiter

Jay & Medha Gore

Tami Greenawalt

Marilyn Hanover

Bret & Julie Hildebran

Jennifer Light-Holets & David Holets

Sandra & Harold Hoskins

Angela Hoyt

Debra Hudgens

Qiong & Thomas Jackson

Avra-Marie Jain

Judith & Bradley Kicklighter

Kathryn Kinsey

Casey Kirchner

Deborah Kumpf

Laura Launikitis

Sarah Loehr

Amy & Gregory Loomis

Julia & Benjamin Loveless II

Melissa Lovino

Christine Lowmaster

Michelle & Samuel Lyons

Rachel Mace

Phyllis Marlur

Karen McLaurin

Pamela McVeigh

Ashley Mehringer

Holly Miller

Charity & Mark Monroe

Adriene Moore

Julie Moore

Mark & Carol Mosher



INDIVIDUAL DONATIONS FY 2006-07

Susan & Roger Nelson
Margaret Offerle & Timothy Kerr
Susan & Robert Owen
Karen & Jason Owens
Jodie & James Peller
Carolyn & John Percifield
Heidi Peterson
Michele & John Pottratz
Edith Probus
Jane Quirk & Steven Barnes
Gale Rahmoeller
Lois Raphael
Mary Razminas
Barbara Ricca
Caryn Riggs
Herman Rose
Robert Roth
Vicki Rothhaar
Mark & Melanie Rubino
Jennifer & James Rumsey
Alvin & Margetta Schmertzler
Jeanette & Donald Schriner Jr.
Tracy & Stephan Sellers
Gregory & Sandra Sides
Ann Simmons & Erik Seligman
Mary & Richard Smith
Sheri & Ryan Stark
Chad & Alice Starr
John Stauffer
Nancy Stein
Mary Stoddard
Pamela & Stephen Strollo
Lillian Swindell
Carol Tasillo
Laura & John Titak IV
Ellen Tobias

Ellen Truby
Linda & Terrence Trumm
Melanie & Fredric Varin
Rinda & John Vas
Richard Vogel & Patricia Slaber
Mara Voglewede
Grace Lin & Ko-Yang Wang
David & Betsy Willis

Total Gift of Up to \$100

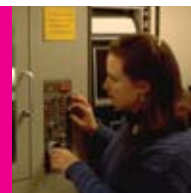
Jennifer Aamodt
Melora & Ronald Adams
Joseph & Sharon Amlung
Summer Anderson
Valerie Andres
Linda & Keith Andress
Vanessa & Michael Arvay
Susan & Carl Arvin
Mary Atkins
Lorel & Roger Au
David & Holly Aulen
Abnna & Richard Aumann
Anna & John Backman
Gloria Bacon-Tiwari
Maureen Bagley
Mary Bailargeon
Paula Baird
Leslie Baker
Rebecca & Shannon Baker
Sarah & Leslie Baker
Roxy Balian
Jean & Matthew Balster
Pamela Baltzell
Bruce & Jane Barger
Allison & Brock Barry
Martha & Robert Bartlett

Krista & Michael Bartoszek
Barbara & Michael Basila Jr.
Suzanne & Charles Bast
Keith & Kathryn Beach
Carol Beatty
Jane & Kenneth Becker
Jennifer & Thomas Bella
Danielle Orr-Bement & Joseph Bement
Debra & Toney Bergman
Cynthia Bernauer
Elizabeth Billings
George & Beverly Biltz
Anne & Martin Blazic
Laura Bleil-Blake
Carli Blum
Shirley & Milo Borden
Joseph & Anne Bradley
Kathleen & Eric Bradley
Carrie & John Brainerd II
Julia & Kevin Braman
Robyn & Mark Brands
Rebecca Branson
Alice & John Branstrator
Linda & Keith Brennan
Katherine & Carl Breving
Joseph Brooks
Thomas Brooks III
Elayne Brower
Kerry Brown
Christine Browning
Dina Bruzek
Stacey & John Burr Jr.
Martha Butwin
Karen & Randall Byrne
Karen Canty
Lister Carbon

Jerry Carlin
Lisa Cashbaugh
Stefanie Cassin
Sabrina Casucci
Kimberly Cavalcante
Kristen Cavanaugh
Cynthia Cerefin
Achala & Achinta Chatterjee
Donna Chen
Jessica Chen
Elizabeth Chilcoat
Christie Chojnacki
Teresa Chrisholm
Rebecca & John Christenson
Lauren Christopher & David Duffield
Christine & Marc Church
Lisa & Mark Churitch
Katherine Cimperman
Julie Clark
Marian Clark
Sara Clark
Jodie & Thomas Collignon
Cathy Collins
Catherine & Brent Conrad
Heather Cooper
Kim Corsi
Christine & Robert Corum
Mary Corya
Holly & Erik Couch
Dorinda Courtine-White
Jennifer Craig
Mary Crowley
Karen Czyns
Donna Dant
Tamara Daugherty
Elizabeth DeBartolo



Edward Delery	Stephanne Flint	Claudia & Patrick Gunsch	Debra Homce
Stacey Dell	Brooke & John Folkers	Wendy & Terry Gutermuth	Renae Hopf
Timothy & Ann Dempsey	Dianne & Robert France	Lisa Haas	Pamela Horning
Kris Dermody-Nolan	Linda Franczyk	Anita Hagen	Patrick Houghton & Elizabeth Schaub
Madhavi Deshpande	Ann & Kevin Freund	D. Hall	Rose & Bobby House Jr.
Pamela & Walter Dickerson	Susan Frey	Fredrick & Laura Hamilton	Elyse Houser
Colleen & Robert Dickinson	Carolyn & David Fries	Mary & Mitchell Hamman	Elodie Hudson
Karen & Brian Dilsheimer	Rachel Morgan-Fruth & Randolph Fruth	Margo Hammell	Ruth & Thomas Hullinger
Melissa Doan	Chunming Fu	Janeen & Jason Hammond	Andra & Michael Humes
Margaret & Stephen Dobler	Lisa Fulton	Mary Hand	Marjorie Hunter
Dennis & Karen Dolohanty	Mony & Gavin Furtado	Holly Mancusi-Hand & Jeffrey Hand	David & Kelley Hurt
Kathleen Donahue	Shawn & Angela Gabert	Lisa & Walter Harding	Kari Imamura & Alan Mock
Kathy & William Dorsch	Mary Gambone	Lynne Harms & Jerry Ellenberger	Jill & James Inglis
Barbara Draper	Tari & David Gard	Lisa Harper	Lyn Irving
Rebecca Dreasher	Keith & Marcia Garvens	Maureen Harping	Mirai Ito
Barbara Duffner	Kimberly & John Garvey	Carrie Harris	Mary Jackson
Rachel & Gary Duncan Jr.	Margaret & Mark Gibb	Heather & James Harris Jr.	Laura Jacobs
Deborah & Kenneth Edwards	Karen Gibson & Kim Chapman	Anne & Mark Hartigan	Pamela Jacobs
Melissa Effinger	Percy & Shireen Gilbert	Corrie & Jeremy Hartman	Julie Jagoda
Rosanne Eldridge	Ralph & Josephine Gilbert	Melina Hartz	Nicole Johannigman
Tricia Elston	Shari Glenn	Michelle & Robert Harvard	Lisa & Timothy Johnson
Karen Estes	Anne Godfrey	Beth Harvey	Konni Johnson
Renee Evans	Jennifer Goforth	Patricia & Thomas Hawley	Amy Jones
Mary Evertt	Janet & Scott Goings	Nicole Hazelett	Angela & Grenell Jones
Laurie & Edward Exson	Amanda Goss	Mary & Christopher Hedges	Elizabeth Jones
Joyce Eyerly	Lim Grace	Lynn & Glenn Hegewald	Joyce Jones-Myers
Ann Fagan	Audrey & Jon Grassman	Karen Heilman	Kathryn & Kris Jorgensen
Robert & Jenell Fairman	Cassandra Gray	Stacey Henkel	Renee Jung
Jennifer & Paul Fanson	Diane Graziano	Daniel & Rebecca Herr	Susan & Gregory Kapraun
Cynthia & Thomas Farrer	Linda Green	Nancy Herring	Andrea Knox-Kelecyc & Patrick Kelecyc
Kathryn Favali	Katherine & Douglas Greenhill	Judith Hessling	Lora & Kevin Keller
Sandra Ficke-Brandford	Kimberly Greenwell	Edith Hildebeitel	Heather Kelmer
Stacey Ficker	Sinead & Joseph Gregory	Rosemarie & William Hittie Jr.	Leah Kennelly
Beth & Bradley Files	Natalie Grimmer	Heather Hoblet	Carolyn & Derek Kerr
Cynthia & Gerald Fink	Susan & Robert Gross	Hachelle Hoenert	Dolli Kettron
Jill Fisher	Kelli & Chad Grothen	Robin & Steve Holmes	Patricia & Timothy Kilgore





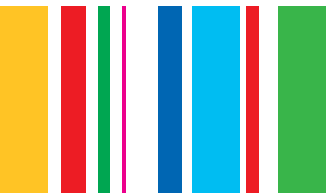
INDIVIDUAL DONATIONS FY 2006-07

Heather King
Sherry King
Judy King
Kay Kirkpatrick
Joanne Kleem
Patricia & James Klosterman
Monique & Andrew Kofoid
Theresa Kondel
Agatha Kotsonis
Catherine & John Kozik Jr.
Mary & David Kribel
Cheryl Kucharski
Lisa LaBean
Mary Laird
Michael & Victoria Laird
Charlotte Lamb
Jennifer & Adam Lammers
Cindy & John Lamper
Nancy Lane
Rebecca & Christopher Langan
Betsy & Daniel Lange
Lee & Steven Lankton
Lisa & Jack Laughner
Linda Lazor
Pamela Leatherwood
Junfeng Leng
Amy & David Lester
Jacquelyn Levin & Michael Rubin
Kenneth & Elizabeth Lewen
Nancy Lichtle
Mildred Lierman
Heather Light
Theresa Lindley
Elaine & Christopher Lohroff
Jennifer & Jack Long
Rosalind Long & Thomas Maliszewski

Josef & Kathleen Lorenz
Joann Losche
Katherine & Matthew Lowrie
Janet & James Lump Jr.
Elaine Luther
Karen Lyle
Theresa Machlan
Crystal Mack
Shelye Magee
Kathleen & J. Mallery
Gwyn Heine-Mannion & Patrick Mannion
Leona Marino
Annette & John Marsteller
Jennifer & Timothy Marvin
Denise Masi
Patricia Matthews
Susan Mayer
Robyn & Martin Maynard
Joellen & Daniel McAninch
Kristen & Thomas McCain
Tina McCosky
Michelle & Michael McGinley
Theresa McGuigan
Michele McHenry
Patricia & Matthew McKinney
Marilyn McIlvaine
Michelle Medlin
Catherine Meilinger
Carolyn & Alan Meiss
Hope & Sanford Melville
Christine & Marriner Merrill
Kimberly Merriman
Susan Metro
Sandra & Philip Metzler
Elizabeth & Michael Meydenbauer
Wendy & Rick Meyer

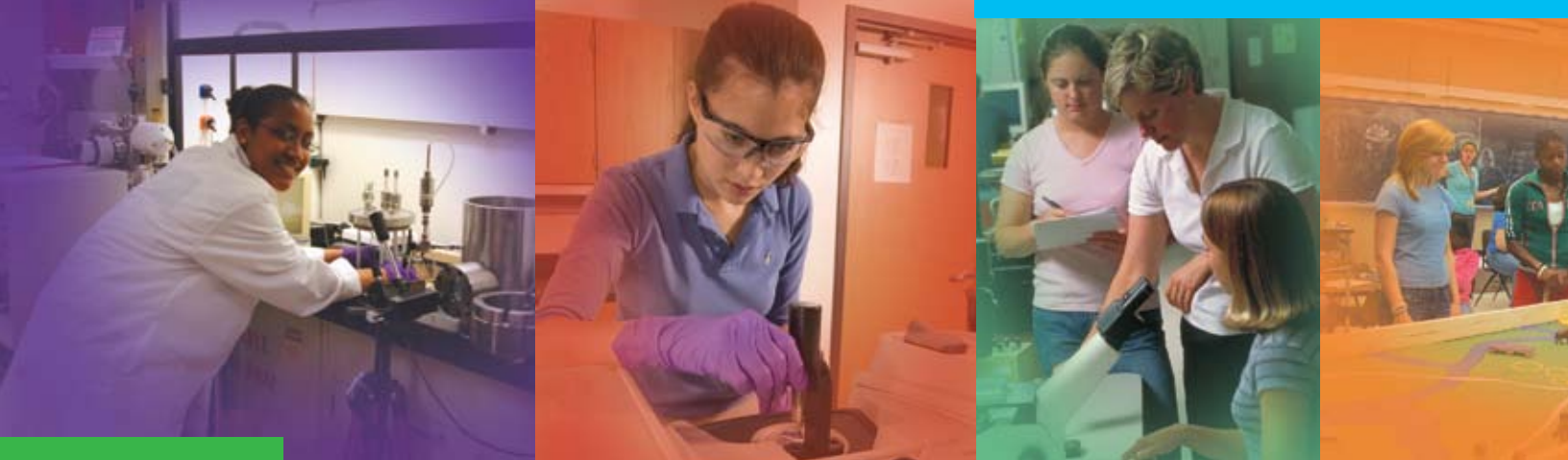
Linda Meyer
Molly Meyer
Sarah Meyer
Leeza & Gregory Mignery
Christina Miller
Frances Miller
Mary & Barry Miller
Doreen Mitchell
Lisa Mitchell
Nicole Mitchell
Sandra & Steven Mitton
Amy Monical
Mary & Kent Montgomery
Christine & Matthew Moore
Kelly & Michael Moore
Elizabeth Moorehead & Jeffry Russell
Lara & Todd Morey
Andrew Morgan & Amy Wesseler-Morgan
Bonita Morgan
Ethel Morgan & Bruce Berner
Rosalie & Jeffrey Morgan
Emily & Michael Morin
Helen Morlock
Mary Morris
Mary Mosier
Alicia Mruthyunjaya
Veronica & Marcus Murry
Kathryn Murtha
Jennifer Musall
Constance Musler
Robert & Cynthia Nealon
Amy & Michael Nelson
Elizabeth Newsome
Beth & Kevin Nunning
Margaret O'Connor
Erin O'Donnell

Julie & Daniel O'Hara
Mary & Raymond O'Leary
Margaret & Jorge Olivares
Lee & Chris Ols
Laura Olson
Marcia O'Malley
Amy & Michael Paddock
Kristin Palecek
Constance Pallas
Grace Park
Kimberly Parks
Reem & Mark Pashan
Janice Pattengale
Carolyn & Timothy Petersen
Joyce & Claude Peterson
Patricia & Mark Peterson
Ethel & Athos Petrou
Elizabeth Phillips-Jones
Leisha Pica
Vicki & David Pinella
Andrea & George Plain
Janet Platt
Jamie & Thomas Poczekay
Kathryn Farrell-Poe & Stephen Poe
Kathleen Polizopoulos
Susan Pressman
Jennifer & Brian Preston
Marion & John Puccioni
Naureen Punjwani
Joan Purucker
Jennifer Quick
Shannon Quinn
Sharon Ranck
Laurie Rasmussen
Anne & Kevin Rearick
Lauramae Recupero



Christina Regnier	Davee & Christopher Setzer	Beverly Suddarth	Elizabeth & James Waltz
James & Carol Renna	Michele Millings-Shand & Paul Shand	Karen Suitor	Jenine Ward
Abigail Reuter	Anne Shelchuk	Renee & Christopher Sullivan	Tara Weidner
Theresa Rey	Cassandra & Theron Shell	Shung Sung & Donald Nefske	Sarah Weissinger
Susan Richards	Emily Sherman	Amy Swierczewski	Sally & Paul Wells
Amanda & Jamie Rickard	Mary Sherman	Wendy & James Swindol	Ann & Phil Wettersten
Stacy Riddle	Nancy & Dale Shimp	Katherine Swit	Carol & William Wheeler
Nancy Ridenour	Elizabeth Sickels	Kirsten & Frank Szendrey	Sheri White
Scott & Veronica Rife	Judith Simmons	Jennifer & Thomas Talavage	Julie & Jon Whitney
Amy Ritter	Emily & Kenyatte Simuel	Trisna Tan	Lisa Wilcox
Karleen Robertson	Kimberly Sittou	Maureen Tarquini	Ruth Wiley
Ronna Robertson	Teresa Skojac	Jo Tarrh	Ottilia & Ronald Wilkins
Dianne & Robert Rodenbeck	James Skridulis	Joanne Taylor	Judith & Millard Williams
Christine Ross	Mary & Louis Slimak	Recinda Telsrow	Paula & Philip Williams
Lisa Runge	Jill & Ronald Smith	Rita & Jeffrey Thurston	Raney & Brett Williams
Angela & Shawn Russell	Julie Smith	Alyson & Thomas Tighe	Terri Wills
Ellen Russell & Peter Foley	Sandra Smith	Fran & Stephen Timmerman	Melinda Wilsford
Karla Russell	Amy & Chad Smitley	Anne & Kevin Tkacz	Alice Wilson
Sahra Sedigh Sarvestani & Showkat Ali	Martha Spang	Susan Tomarchio	Pamela Wilson
Stacey & Matthew Schafer	Tina & Thomas Spencer	Nicole Tompkins	Elizabeth Winkler
Ethel Schelly	Ann & Scott Springer	Lori & William Traweek	Susan Winter
Julie Schenck	Stephanie & Raphael Sprinkle	Christine & Richard Trowbridge	Paula Wlos & Eric Franklin
Florence Schillmoeller & John Wiseman	Jeffrey & Nikki Sriver	Elizabeth Truelove	Jacqueline & Mark Wohlford
Christin Schippnick	Stephanie Stahl	Shu-Chen & Kong-Thon Tsen	Anne Wolf
Lorie Schmidt	Gail Stallings	Karen Tutwiler	Laura Wolski
Timothy & Laura Schoenecker	Pamela Stanley	Helen Uhrig	Terri & Jeffrey Woodard
Kay Schoenefeld	Taryn & Kenneth Stebbings	Margaret Umphres	Christina Worrall
Laura & Donald Schofield	Robin Steel	Kimberly & Robert Underhill III	John Wright
Jennifer Schoonover	Catherine Stein	Leslie Valley	Heather Wuttke
Lisa Schroeder	Penny Stewart	Sheela & Mahesh Veerina	Li Xu
Grace & Andrew Schulz	Michael & Karen Stitsworth	Karen & Michael Visich	Marilyn Yager
Jennifer Schuppe	Kindra & Paul Stockebrand	Shannon & Lance Vondrak	Rebecca Yassan
Heather & Johnathan Schurr	Carol Story	Jennifer Walding	Allison Youngs
Margaretha Schwarz	Therese Stovall	Tina Walker	Michele & Jacek Zagorski
Meredith Sears	Natalie Stubbings & Michael Moses	Sharon Waller	Susan & Steven Zellers
Jennifer & Rick Senesac	Tai-Chi Su & Chunsu Li	Rhonda & Larry Walthall	





PURDUE

UNIVERSITY

WOMEN IN ENGINEERING PROGRAM

Neil Armstrong Hall of Engineering, Room 1245
701 W. Stadium Avenue
West Lafayette, IN 47907-2045
puwie@ecn.purdue.edu
www.purdue.edu/wiep
EA/EOU

Nonprofit organization
US Postage Paid
Purdue University